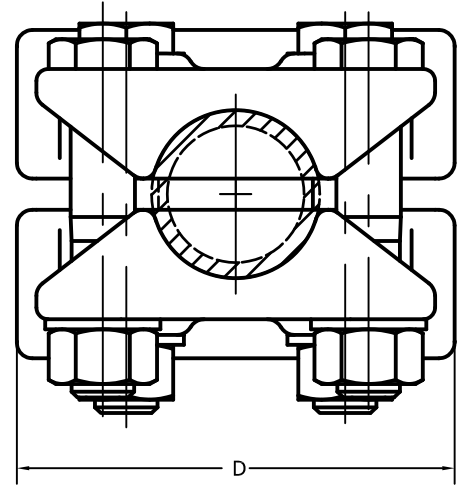
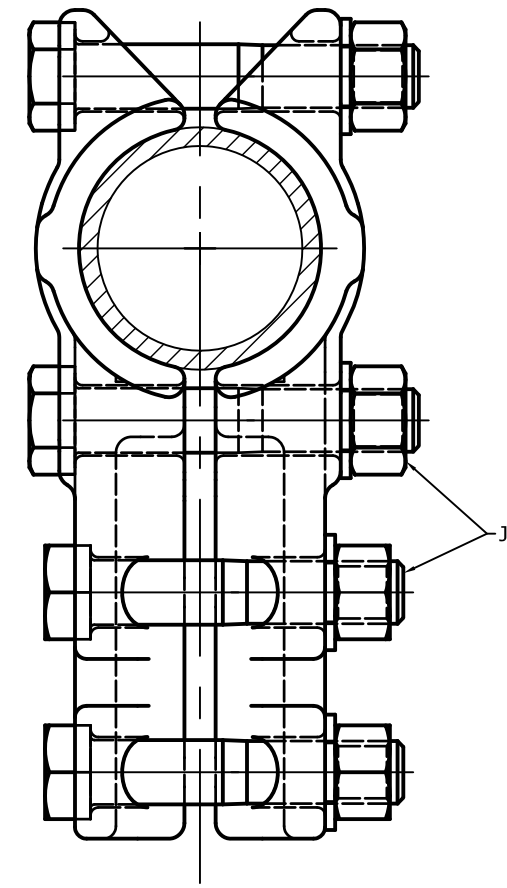
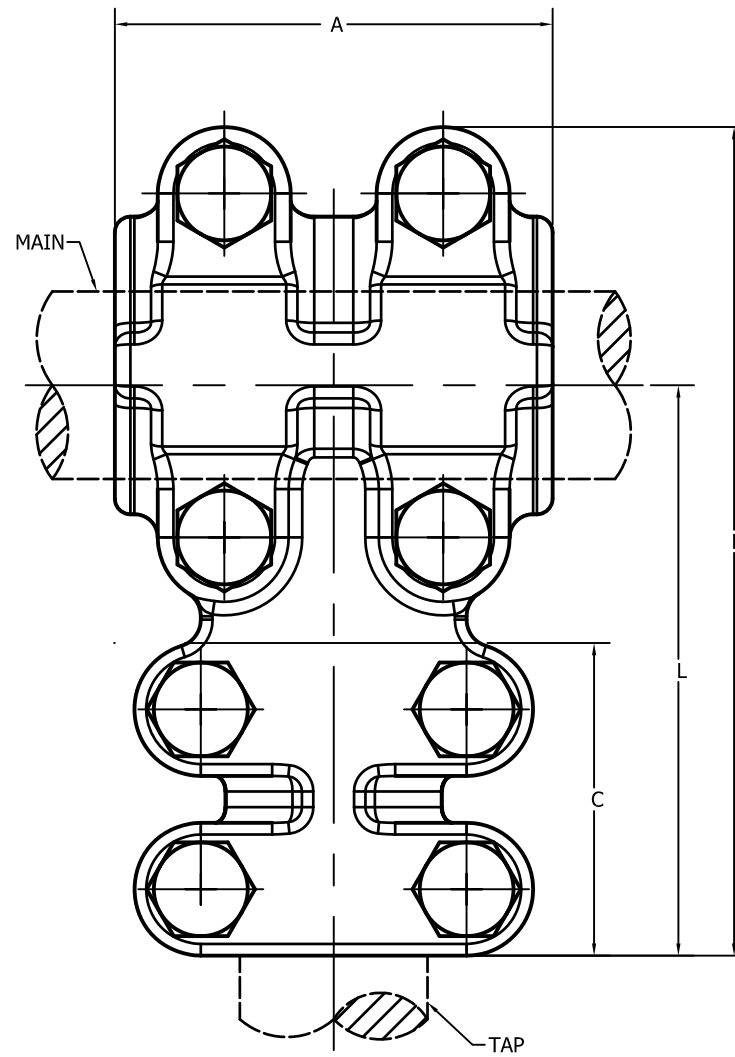


CATALOG NUMBER	CONDUCTOR SIZE IPS		DIMENSION IN INCHES					
	MAIN	TAP	A	B	C	D	L	J
TTH-0404-3	1/2"	1/2"	2.250	4.625	2.250	2.188	3.563	.375
TTH-0404	1/2"	1/2"	2.500	5.188	2.500	2.563	3.938	.500
TTH-0604-3	3/4"	1/2"	2.250	5.000	2.250	2.188	3.750	.375
TTH-0604	3/4"	1/2"	2.375	5.625	2.375	3.000	4.125	.500
TTH-0606	3/4"	3/4"	2.500	5.625	2.500	3.000	4.125	.500
TTH-1004	1"	1/2"	2.500	5.813	2.500	2.688	1.250	.500
TTH-1006	1"	3/4"	2.500	5.813	2.500	3.000	4.250	.500
TTH-1010	1"	1"	2.500	6.000	2.500	3.188	4.438	.500
TTH-1204	1 1/4"	1/2"	2.750	6.188	2.500	2.688	4.438	.500
TTH-1206	1 1/4"	3/4"	2.500	6.375	2.500	3.000	4.625	.500
TTH-1210	1 1/4"	1"	2.500	6.188	2.500	3.188	4.438	.500
TTH-1212	1 1/4"	1 1/4"	2.750	6.500	2.750	3.563	4.500	.500
TTH-1404	1 1/2"	1/2"	2.750	6.500	2.500	2.688	4.563	.500
TTH-1406	1 1/2"	3/4"	2.375	6.188	2.375	2.938	4.375	.500
TTH-1410	1 1/2"	1"	3.500	6.625	2.500	3.188	4.750	.500
TTH-1412	1 1/2"	1 1/4"	2.750	6.813	2.750	3.563	4.625	.500
TTH-1414	1 1/2"	1 1/2"	3.250	6.563	2.750	3.688	4.750	.500
TTH-2004	2"	1/2"	2.750	7.125	2.500	2.688	4.875	.500
TTH-2006	2"	3/4"	2.750	7.125	2.500	3.000	4.875	.500
TTH-2010	2"	1"	2.500	7.000	2.500	3.188	4.813	.500
TTH-2012	2"	1 1/4"	2.750	7.375	2.750	3.563	5.125	.500



CASTING TOLERANCE CHART		
LESS THAN 2"	2"-6"	GREATER THAN 6"
±.031	±.047	±.063
ANGULAR TOLERANCE ± 1°		

**NOTES:**

1. MATERIAL: CASTING 255 ELECTRICAL BRONZE ALLOY  
HARDWARE: STAINLESS STEEL
2. TO OBTAIN A TIN PLATED CONNECTOR ADD SUFFIX "TP".  
EX) TTH-2012-TP
3. TO OBTAIN EVERDUR(SILICON BRONZE) HARDWARE ADD  
SUFFIX "ED". EX) TTH-2012-ED

71347	09/26/2017	HG	HG
EC #	DATE	CHG BY	RESP ENG
DESC OF DWG: NEW PRODUCTION DRAWING CREATION			
REASON (S) FOR CHANGE: DISPOSITION OF MAT'L:			

**HPS**

CONFIDENTIAL: THIS DRAWING AND ITS CONTENTS ARE CONFIDENTIAL AND THE EXCLUSIVE PROPERTY OF HUBBELL POWER SYSTEMS. NO PUBLICATION, DISTRIBUTION OR COPIES MAY BE MADE WITHOUT THE WRITTEN CONSENT OF HUBBELL POWER SYSTEMS. HUBBELL POWER SYSTEMS UNPUBLISHED ALL RIGHTS RESERVED UNDER THE COPYRIGHT LAWS

**HUBBELL POWER SYSTEMS**

**TEE CONNECTOR  
TUBE TO TUBE TYPE TTH**


SIZE <b>C</b>	DWG NO. <b>C-4044</b>	CAT / PART / ASSY NO. <b>TTH-(SEE TABLE)</b>	REV <b>23</b>
DO NOT SCALE THIS DRAWING	DRN BY <b>TA</b>	DATE <b>12/13/54</b>	SHEET <b>1 OF 2</b>

CATALOG NUMBER	CONDUCTOR SIZE IPS		DIMENSION IN INCHES					
	MAIN	TAP	A	B	C	D	L	J
TTH-2014	2"	1 1/2"	2.500	7.188	2.500	3.813	5.000	.500
TTH-2020	2"	2"	3.250	8.125	3.250	4.500	5.438	.500
TTH-2024	2"	2 1/2"	3.250	8.313	3.250	4.750	6.000	.500
TTH-2406	2 1/2"	3/4"	3.250	7.375	2.500	3.000	5.125	.500
TTH-2410	2 1/2"	1"	3.250	7.563	2.500	3.188	5.188	.500
TTH-2412	2 1/2"	1 1/4"	3.250	7.625	2.750	3.563	5.250	.500
TTH-2414	2 1/2"	1 1/2"	2.500	7.875	2.750	3.875	5.875	.500
TTH-2420	2 1/2"	2"	3.250	8.125	3.250	4.500	5.750	.500
TTH-2424	2 1/2"	2 1/2"	3.250	8.313	3.250	4.813	5.938	.500
TTH-3006	3"	3/4"	2.500	8.313	2.813	3.000	5.688	.500
TTH-3010	3"	1"	3.500	8.063	2.500	3.188	5.438	.500
TTH-3012	3"	1 1/4"	3.500	8.313	2.750	3.563	5.688	.500
TTH-3014	3"	1 1/2"	3.500	8.313	2.750	3.813	5.688	.500
TTH-3020	3"	2"	3.500	8.813	3.250	4.500	6.125	.500
TTH-3024	3"	2 1/2"	3.500	8.813	3.250	4.750	6.125	.500
TTH-3030	3"	3"	3.500	9.813	3.500	5.813	6.938	.625
TTH-3406	3 1/2"	3/4"	2.500	8.688	2.500	3.000	5.750	.500
TTH-3410	3 1/2"	1"	2.500	8.813	2.500	3.188	5.875	.500
TTH-3412	3 1/2"	1 1/4"	2.500	8.938	2.750	3.563	6.000	.500
TTH-3414	3 1/2"	1 1/2"	3.500	8.938	2.750	3.813	6.000	.500
TTH-3420	3 1/2"	2"	3.500	9.688	3.250	4.500	6.625	.500
TTH-3424	3 1/2"	2 1/2"	3.500	9.438	3.250	4.750	6.438	.500
TTH-3430	3 1/2"	3"	3.500	10.375	3.500	5.813	7.188	.625
TTH-3434	3 1/2"	3 1/2"	3.500	10.063	3.500	6.313	6.938	.625
TTH-4006	4"	3/4"	2.500	9.188	2.500	3.000	5.750	.500
TTH-4010	4"	1"	2.500	9.375	2.500	3.188	6.000	.500
TTH-4012	4"	1 1/4"	2.500	9.625	2.750	3.625	6.250	.500
TTH-4014	4"	1 1/2"	2.750	9.875	3.000	3.875	6.500	.500
TTH-4020	4"	2"	4.000	9.563	3.250	4.500	6.313	.500
TTH-4024	4"	2 1/2"	4.000	9.938	3.250	4.750	6.688	.500
TTH-4030	4"	3"	4.000	10.688	3.500	5.813	7.188	.625
TTH-4040	4"	4"	4.000	11.750	4.000	6.938	8.250	.625
TTH-1424	1 1/2"	2 1/2"	2.750	7.375	3.250	4.750	5.438	.500
TTH-0414	1/2"	1 1/2"	2.500	5.625	2.750	3.813	4.375	.500
TTH-1024	1"	2 1/2"	2.500	7.000	3.250	4.750	5.281	.500

CATALOG NUMBER	CONDUCTOR SIZE IPS		DIMENSION IN INCHES					
	MAIN	TAP	A	B	C	D	L	J
TTH-1020	1"	2"	2.500	6.438	2.750	4.500	4.875	.500
TTH-0303	3/8"	3/8"	2.000	4.063	2.000	2.063	3.000	.500
TTH-0610	3/4"	1"	2.500	5.625	2.500	3.188	4.125	.500
TTH-0612	3/4"	1 1/4"	2.500	5.875	2.750	3.563	4.250	.500
TTH-1012	1"	1 1/4"	2.500	6.063	2.750	3.563	4.375	.500
TTH-1220	1 1/4"	2"	2.750	5.563	2.750	4.500	4.125	.500
TTH-1224	1 1/4"	2 1/2"	3.250	7.625	3.750	4.750	5.813	.500
TTH-1420	1 1/2"	2"	3.250	7.875	3.750	4.500	5.813	.500
TTH-3040	3"	4"	3.500	10.063	4.000	6.938	7.250	.625
TTH-5020	5"	2"	5.000	11.563	3.250	4.125	8.125	.500
TTH-1214	1 1/4"	1 1/2"	2.750	6.438	2.750	3.813	4.656	.500
TTH-2430	2 1/2"	3"	3.250	8.875	3.500	5.438	6.500	.500
TTH-2030	2"	3"	3.250	8.625	3.500	5.438	6.375	.500
TTH-0412	1/2"	1 1/4"	2.500	5.750	2.750	3.563	4.406	.500
TTH-1014	1"	1 1/2"	2.500	6.063	2.750	3.813	4.500	.250

CASTING TOLERANCE CHART		
LESS THAN 2"	2"-6"	GREATER THAN 6"
±.031	±.047	±.063

ANGULAR TOLERANCE ± 1°

71347	09/26/2017	HG	HG	<b>HPS</b>	 <b>HUBBELL</b> POWER SYSTEMS, INC.	<b>HUBBELL</b> POWER SYSTEMS		
EC #	DATE	CHG BY	RESP ENG					
DESC OF DWG: NEW PRODUCTION DRAWING CREATION				CONFIDENTIAL: THIS DRAWING AND ITS CONTACTS ARE CONFIDENTIAL AND THE EXCLUSIVE PROPERTY OF HUBBELL POWER SYSTEMS. NO PUBLICATION, DISTRIBUTION OR COPIES MAY BE MADE WITHOUT THE WRITTEN CONSENT OF HUBBELL POWER SYSTEMS. HUBBELL POWER SYSTEMS UNPUBLISHED ALL RIGHTS RESERVED UNDER THE COPYRIGHT LAWS		TITLE <b>TEE CONNECTOR TUBE TO TUBE TYPE TTH</b>		
REASON (S) FOR CHANGE: DISPOSITION OF MAT'L:				SIZE <b>C</b>	DWG NO. <b>C-4044</b>	CAT / PART / ASSY NO. <b>TTH-(SEE TABLE)</b>	REV <b>23</b>	
				DO NOT SCALE THIS DRAWING	DRN BY <b>TA</b>	DATE <b>12/13/54</b>	SHEET <b>2 OF 2</b>	